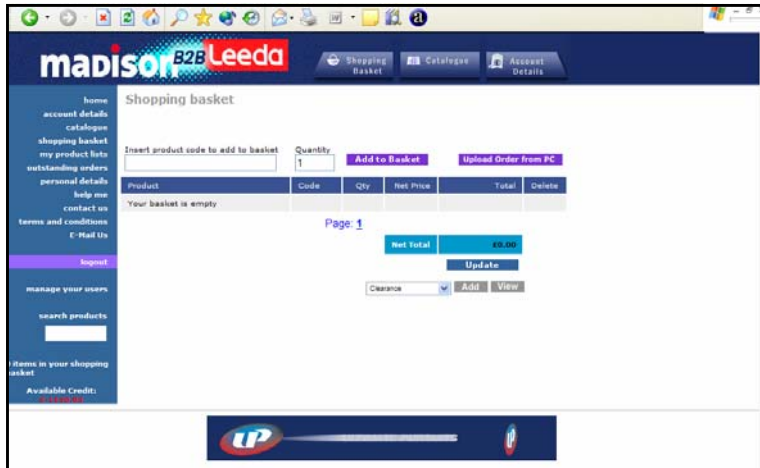


## Importing Orders on [www.madisonb2b.co.uk](http://www.madisonb2b.co.uk)

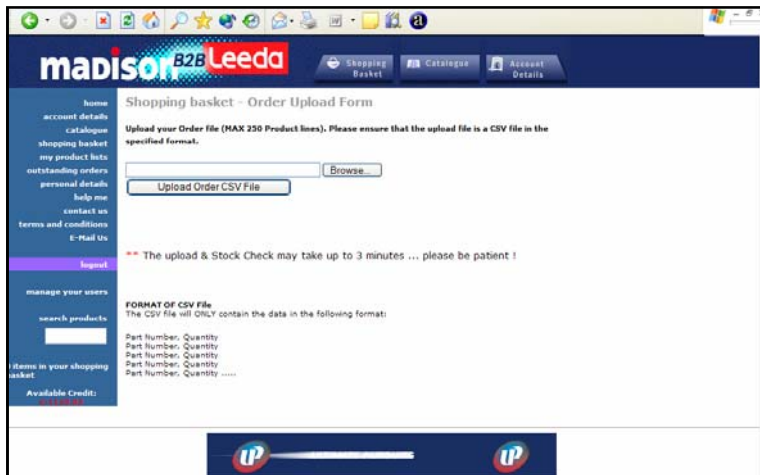


### Importing an Order

Select Shopping basket.  
Click upload order from PC.

The EPoS systems from Stockturn, Abacus and Cybertill will support this functionality.

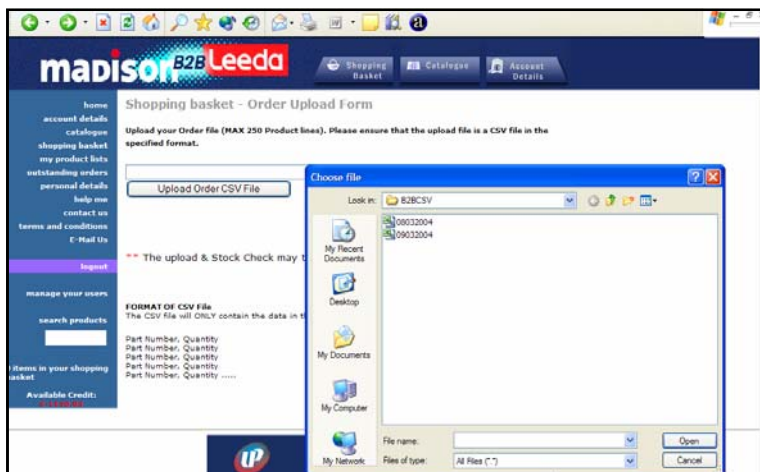
Alternatively, any comma separated file .CSV can be imported so long as the simple format of product code, quantity and one product per line is followed.



Once you click "upload order from PC" you will be presented with this screen.

Please note this facility only allows a maximum of 250 lines to be uploaded at a time.

Click "Browse" to locate your CSV order file on your computer.



Once you have located your .CSV file, click "open".

This will automatically enter the file name and path into the box on [www.madisonb2b.co.uk](http://www.madisonb2b.co.uk).

Be sure to check you are uploading the correct file. A simple way to do this is to set your Windows view to show detail which will include the date of creation or date last changed.

